

GREENWICH PUBLIC SCHOOLS

Greenwich, CT

Greenwich Association of Realtors
at Parkway School
May 5, 2017

Agenda

Welcome and Introduction

- Director of Communications - Kim Eves

New Superintendent, Strategic Plan

- Board of Education Chair – Peter Sherr

State of the Schools

- Superintendent of Schools – Sal Corda

Parkway School

- Parkway School Principal - John Grasso

Q&A

Optional Tour – Performing Arts Center (PAC)



NEW SUPERINTENDENT & STRATEGIC PLAN

- Peter Sherr
Board of Education Chair

New Superintendent



Dr. Jill Gildea

Mission

It is the Mission of the Greenwich Public Schools

- To educate all students to the highest levels of academic achievement;
- To enable them to reach and expand their potential; and
- To prepare them to become productive, responsible, ethical, creative and compassionate members of society

Vision of the Graduate

The Greenwich Public Schools are committed to preparing students to function effectively in an interdependent global community. Therefore, in addition to acquiring a core body of knowledge--which is established in local curricular documents reflecting national and state standards as well as workplace expectations--all students will develop their individual capacities to:



Academic Capacities

- Master a core body of knowledge
- Pose and pursue substantive questions
- Critically interpret, evaluate, and synthesize information
- Explore, define, and solve complex problems
- Generate innovative, creative ideas and products



Personal Capacities

- Be responsible for their own mental and physical health
- Conduct themselves in an ethical and responsible manner
- Recognize and respect other cultural contexts and points of view
- Pursue their unique interests, passions and curiosities
- Respond to failures and successes with reflection and resilience



Interpersonal Capacities

- Communicate effectively for a given purpose
- Advocate for ideas, causes, and actions
- Collaborate with others to produce a unified work and/or heightened understanding
- Contribute to community through dialogue, service, and/or leadership



2015-2020 Strategic Goals



Academic: To ensure each student achieves optimal growth within the core academic disciplines based on multiple variables



Personal: To ensure each student develops the capacity to be responsible for their own physical and mental health



Interpersonal: To ensure each student demonstrates growth in personal development and civic responsibility



STATE OF THE SCHOOLS

- Sal Corda
Superintendent



GPS Points of Pride

National Merit Scholars



**Ten 2017 National Merit® Scholarship Program
Semifinalists;**

Thirty-seven Commended Scholars;

**Seven National Hispanic Recognition Program
Scholars**



GPS Points of Pride

National Science Scholars



2017 Regeneron Science Talent Search

Six Greenwich High School Students named STS Scholars.
Two finalists selected.

From 2010-2017: Twenty-four Scholars/Semifinalists and
Four Finalists (2013, 2014, 2017)



GPS Points of Pride

State Student Historians



THREE Greenwich High School Teams
received First Place in the
2017 Connecticut National History Day
competition;
and are heading to National History Day Competition



GPS Points of Pride

State Math Champions



2017 Connecticut Math League Champions

Eight Out of Nine Years:

2009, 2010, 2011, 2012, 2013, 2015, 2016, 2017



GPS Points of Pride

State Award Winning Artists



**Scholastic
Art & Writing
Awards**

Seventeen GHS students received
2017 CT Scholastic Art Awards,
including **nine Gold Key Awards** and the
CAEA Best in Ceramics



Points of Pride

Nationally Recognized Theater Program



Greenwich High School
Outstanding School Theater Program Award
2000, 2005, 2010, 2015*

*schools are eligible for the award every five years



GPS Points of Pride

State Athletic Champions



**2015-2016: Eight State Athletic Championships;
FCIAC Service Award;
Five FCIAC Coach of the Year Awards;
Athletic Director is member of
FCIAC Hall of Fame**



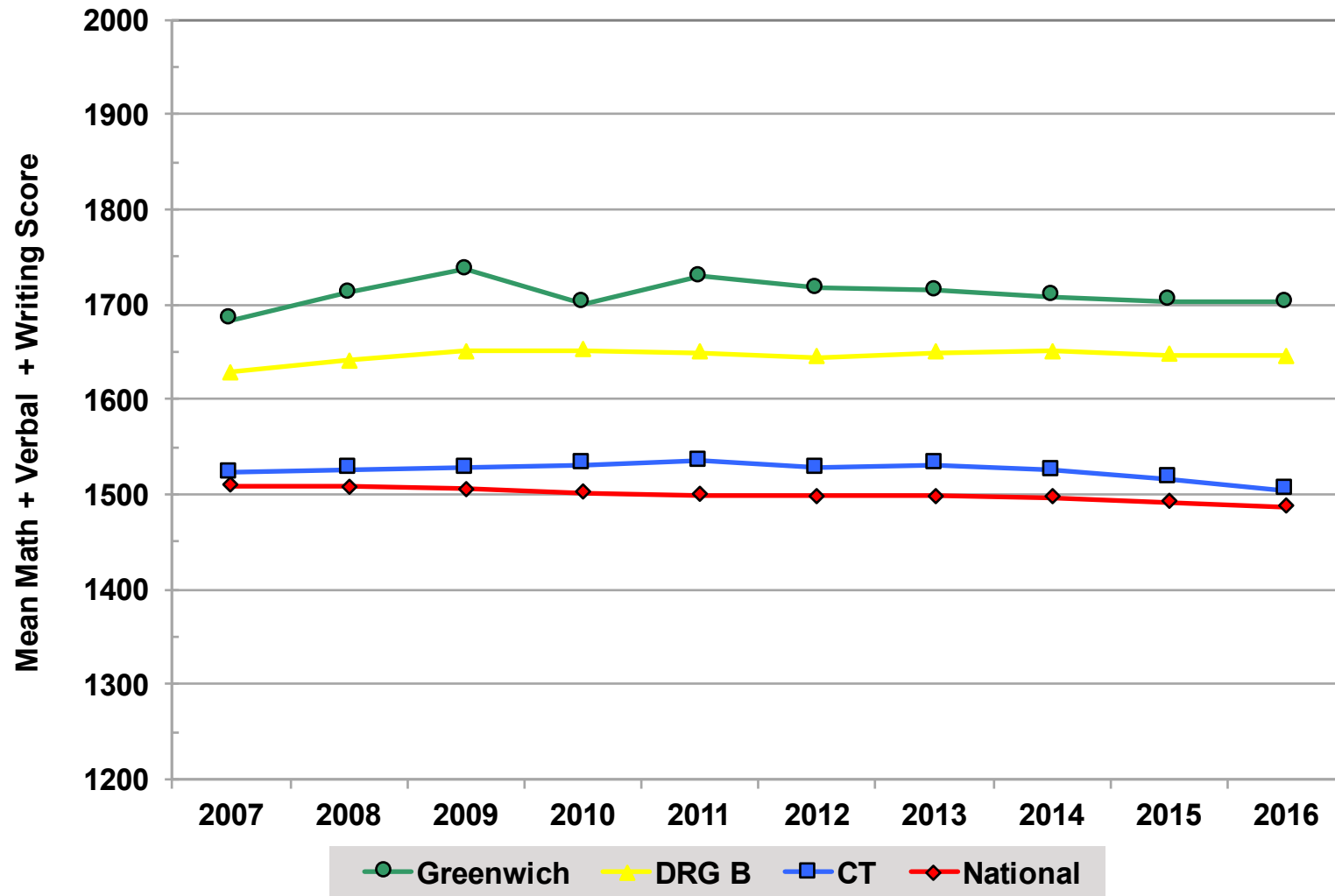
GPS Points of Pride

State Teacher of the Year Finalist

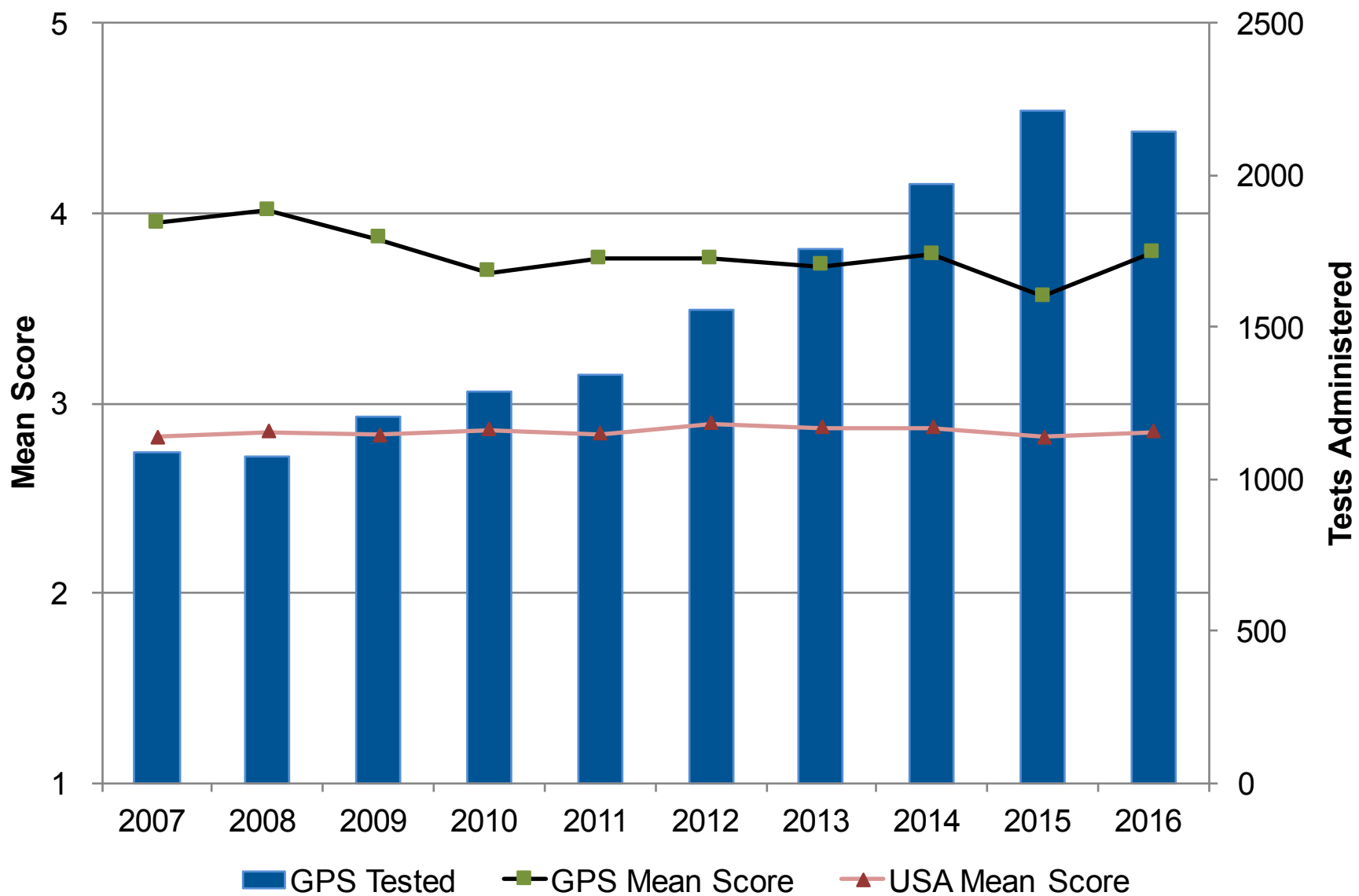


Greenwich High School Teacher Sarah Goldin
selected as **one of four Finalists for the
2017 Connecticut Teacher of the Year**

**Graduating Senior Combined SAT Scores
– National, State and DRG B Comparison
2007 to 2016**



Greenwich High School Mean AP Scores vs AP Tests Administered





Definition

Personalized Learning*

Personalized learning is a teacher facilitated process that provides each student with meaningful choice, guided by a standards-based curriculum, in what, where, how and at what pace and appropriate depth they learn, based on individual strengths, needs, motivations, interests, goals, and cultural background

*working definition

GREENWICH PUBLIC SCHOOLS



Realtor GPS Web Resources

[New GPS Family FAQ](#)

[Realtors Meetings](#)

[Registration](#)

[Residency Verification](#)

[Health Forms/Immunizations](#)

[School Finder](#)

*working definition

GREENWICH PUBLIC SCHOOLS



Changing School Bell Times

New Bell Times effective for the 2017-2018 School Year:

	Preschool	Elementary	Middle	High
Start	8:30 a.m. (NSS, PKW, OGS) 8:15 a.m. (HAS)	8:15 a.m. (HAS, JCS, NLS) 8:45 a.m. (CCS, GLV, ISD, NMS, NSS, OGS, PKW, RIV)	8:00 a.m.	8:30 a.m.
Dismissal	1:30 p.m. (NSS, PKW, OGS) 2:30 p.m. (HAS)	2:45 p.m. (HAS, JCS, NLS) 3:15 p.m. (CCS, GLV, ISD, NMS, NSS, OGS, PKW, RIV)	2:50 p.m.	3:15 p.m.
Change from current times	No Change	No Change	15 minutes later	60 minutes later

PARKWAY SCHOOL

- John Grasso
Principal