

GREENWICH PUBLIC SCHOOLS

Greenwich, CT

Greenwich Association of Realtors
at Greenwich High School
May 23, 2016

Agenda

Welcome and Introduction

- Director of Communications - Kim Eves

Strategic Plan & Superintendent Search

- Board of Education Chair - Laura Erickson

Greenwich High School

- Greenwich High School Headmaster - Chris Winters
- Junior Class President - Joseph Magliocco
- Innovation Lab - Sarah Goldin
- GHS Junior – Olivia Hallisey

Optional Tour – Performing Arts Center (PAC)



STRATEGIC PLAN & SUPERINTENDENT SEARCH

- Laura Erickson
Board of Education Chair

Mission

It is the Mission of the Greenwich Public Schools

- To educate all students to the highest levels of academic achievement;
- To enable them to reach and expand their potential; and
- To prepare them to become productive, responsible, ethical, creative and compassionate members of society

Vision of the Graduate

The Greenwich Public Schools are committed to preparing students to function effectively in an interdependent global community. Therefore, in addition to acquiring a core body of knowledge--which is established in local curricular documents reflecting national and state standards as well as workplace expectations--all students will develop their individual capacities to:



Academic Capacities

- Master a core body of knowledge
- Pose and pursue substantive questions
- Critically interpret, evaluate, and synthesize information
- Explore, define, and solve complex problems
- Generate innovative, creative ideas and products



Personal Capacities

- Be responsible for their own mental and physical health
- Conduct themselves in an ethical and responsible manner
- Recognize and respect other cultural contexts and points of view
- Pursue their unique interests, passions and curiosities
- Respond to failures and successes with reflection and resilience



Interpersonal Capacities

- Communicate effectively for a given purpose
- Advocate for ideas, causes, and actions
- Collaborate with others to produce a unified work and/or heightened understanding
- Contribute to community through dialogue, service, and/or leadership



2015-2020 Strategic Goals



Academic: To ensure each student achieves optimal growth within the core academic disciplines based on multiple variables



Personal: To ensure each student develops the capacity to be responsible for their own physical and mental health



Interpersonal: To ensure each student demonstrates growth in personal development and civic responsibility



Definition

Personalized Learning*

Personalized learning is the provision of customized learning paths, anchored in a standards-based curriculum, for each child that gives students meaningful choice in what, where, how and at what pace they learn based on their individual strengths, needs, motivations, interests, goals, and cultural background

*working definition

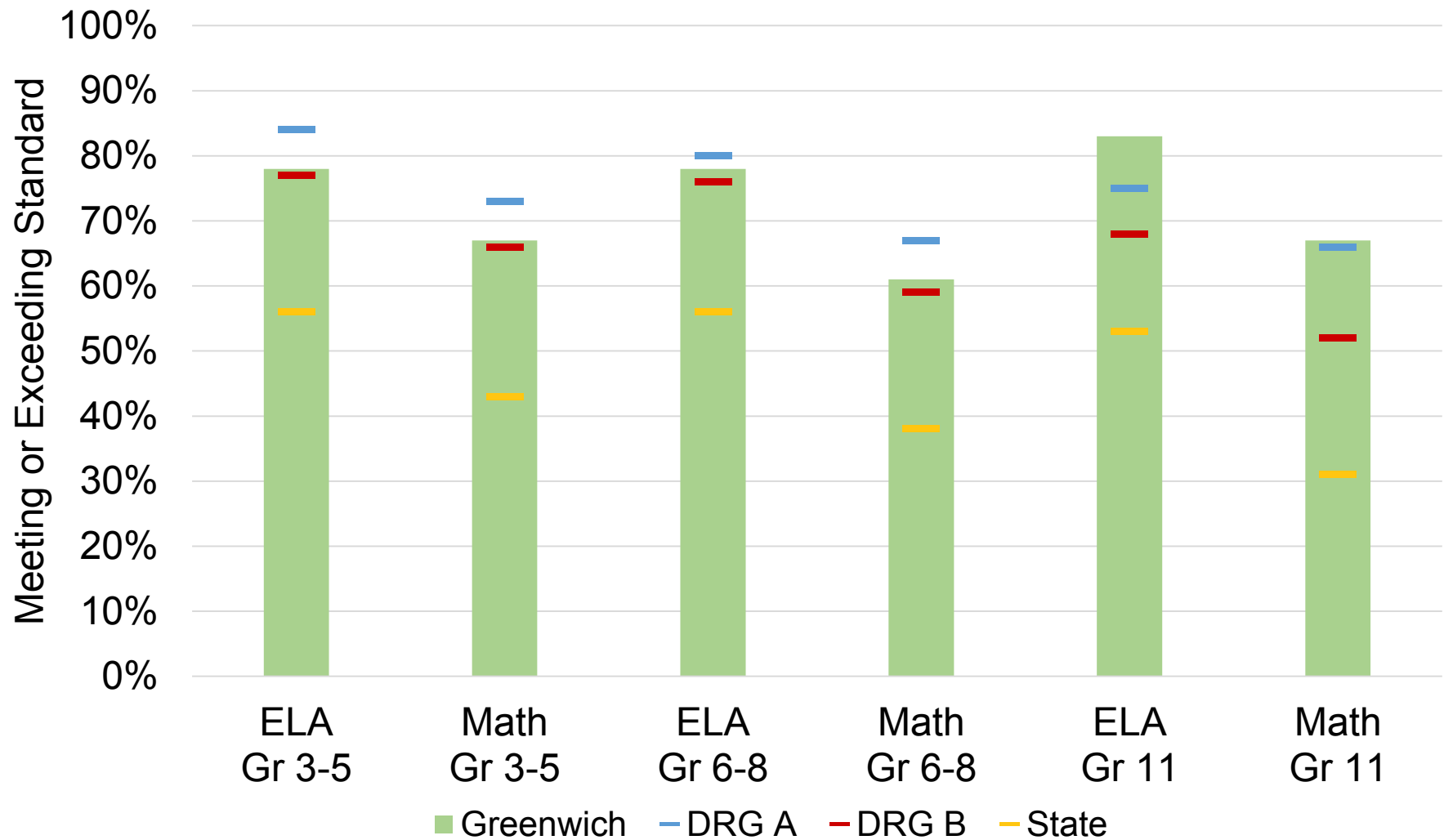
GREENWICH PUBLIC SCHOOLS



Strategies & Action Plans

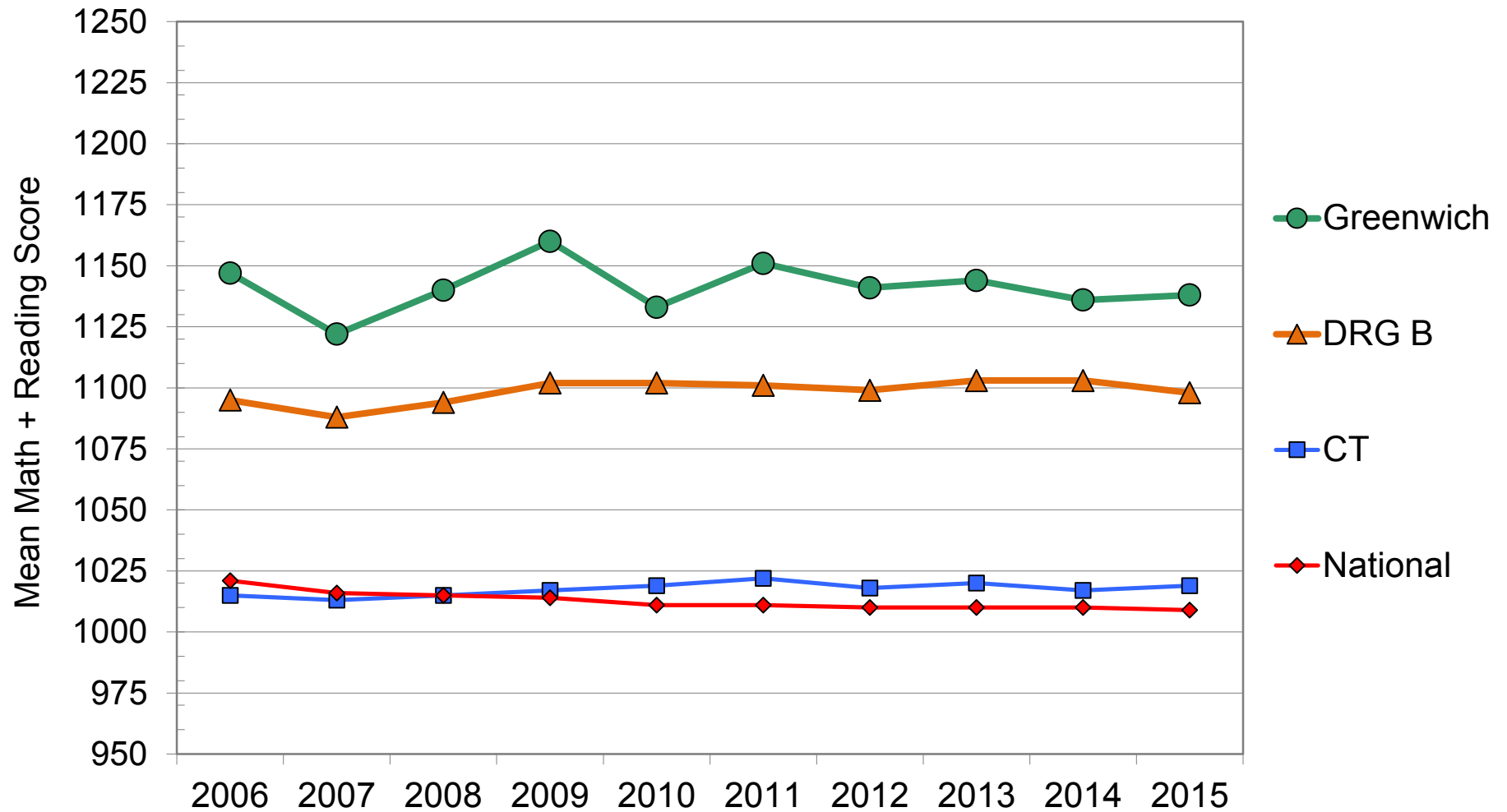
- **Foundational Strategy:** Digital Learning Environment
- **Strategy 1:** Leadership & Management
- **Strategy 2:** Curriculum & Instruction
- **Strategy 3:** Social Emotional Learning & Family and Community Engagement
- **Strategy 4:** Data Management & Information

Smarter Balanced Assessment Spring 2015



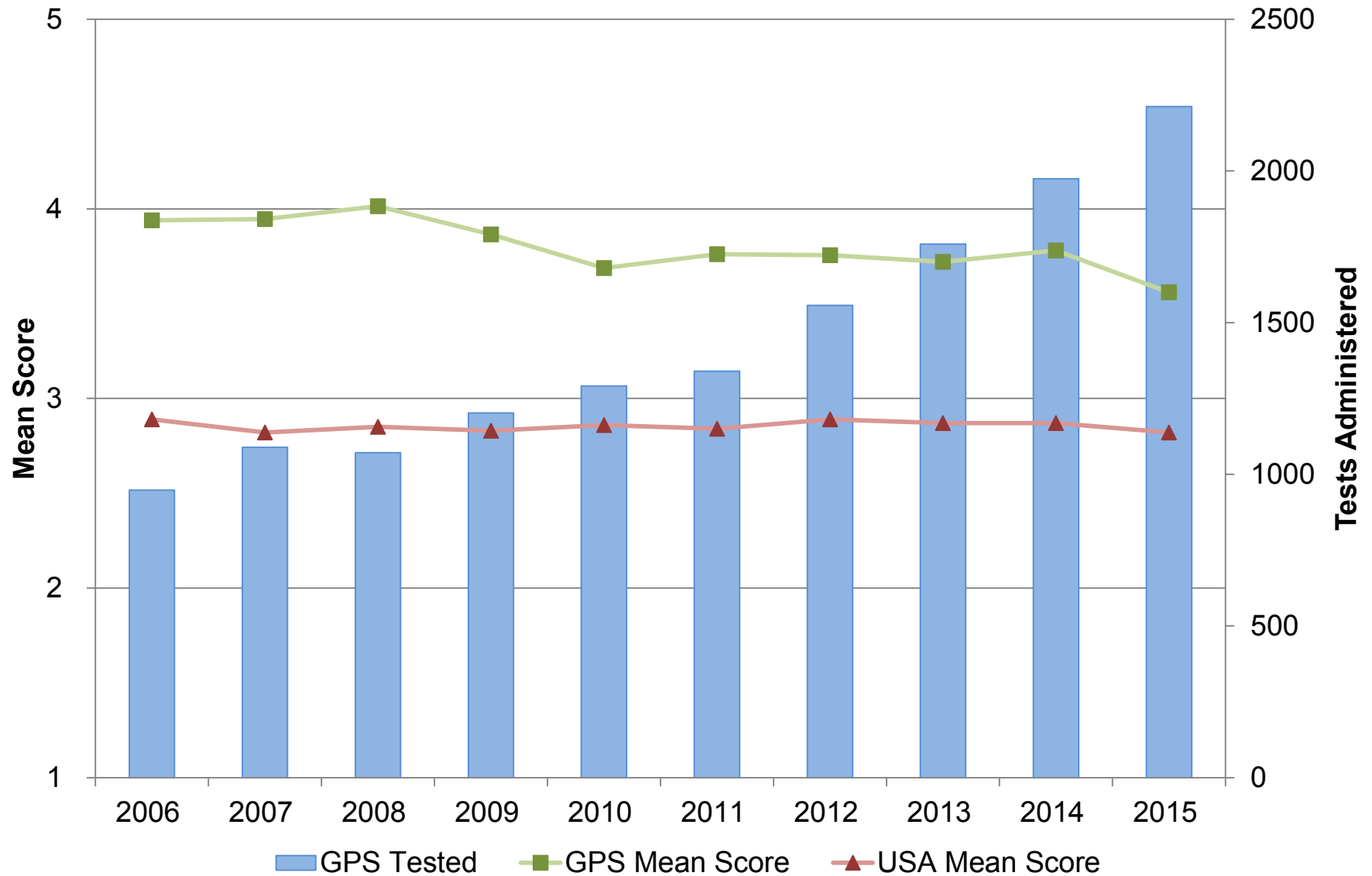
Note: District Reference Groups (DRG) are communities with similar demographic characteristics. Greenwich is in DRG B along with Fairfield, Newtown and Simsbury among others. DRG A includes Darien, New Canaan, Westport and Wilton.

College Board SAT Combined Math and Reading Score 2006-2015



Greenwich High School

Mean AP Scores vs AP Tests Administered



GREENWICH PUBLIC SCHOOLS

Merit Scholars



2015-2016:

Ten National Merit Semifinalists
Thirty-seven Commended Students
Three National Hispanic Scholars

Science



**2015 Google Science Fair
Global Grand Prize Winner:
GHS Junior Olivia Hallisey**

GHS Junior Margaret Cirino is Regional Finalist

Science



2015 Intel Science Talent Search

Seven Semifinalists

From 2010-2015

Seventeen Semifinalists and Two Finalists

GREENWICH PUBLIC SCHOOLS

Science



2015 International Science Fairs

Intel ISEF: Seven Finalists

From 2010-2015: Thirteen Finalists

**I-SWEEEP Olympiad: One Grand Award,
Two Gold Medal and Two Bronze Medal Awards**

Science



2015 CT Science and Engineering Fair

Thirteen GHS Finalists; One CMS Finalist

Five Finalists Selected for Intel ISEF

Four Finalists Selected for I-SWEEEP Olympiad

GREENWICH PUBLIC SCHOOLS

Math



CT State Math League Champions
2009, 2010, 2011, 2012, 2013, 2015, 2016

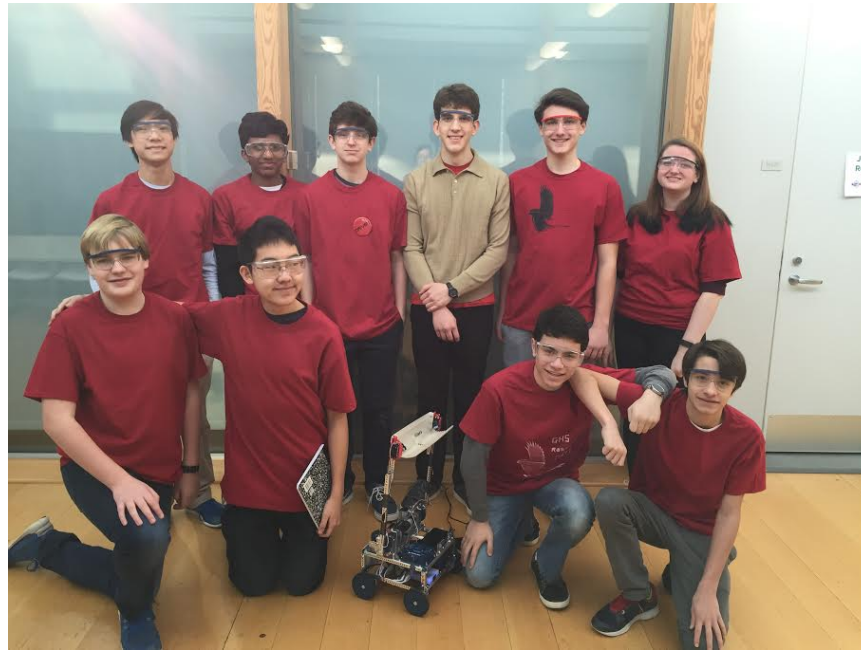
GREENWICH PUBLIC SCHOOLS

Math



GHS Student Michael Kural member of winning U.S. Team
2015 International Mathematical Olympiad
First U.S. Team to win in twenty-one years

Robotics



GHS ROBOTICS TEAM QUALIFIES FOR STATE CHAMPIONSHIP

First time team participates in First Robotics
Qualifying Competition receives Second Place

GREENWICH PUBLIC SCHOOLS

Writing



2015 New York Times Editorial Contest
Two GHS Student Essays in Top Ten Nationally
One Essay Receives Honorable Mention

Debate



**GHS Debate Team among top 16 teams in
2016 International Public Policy Forum
Debate Competition**

Johns Hopkins Talent Search



2014-15: Eighteen GPS students scored in
Top 25-30% in Nation
on the SCAT (Grades 2-6) & the SAT (Grades 7-8)

Art



**Scholastic
Art & Writing
Awards**

2015

Eleven GHS students received:
Twelve CT Scholastic Art Awards,
Two scholarships, and
One of Five Best in Show Awards

Music



**GPS Honor Choir
Received a Gold Award and Superior Rating
at the
2014-2015 Chicago World Strides
Heritage Music Festival**

Theater Arts



2000, 2005, 2010, 2015

Outstanding School Theater Program Award*

Greenwich High School

*schools are eligible for the award every five years

Athletics



2014-2015

Four State Athletic Championships

Three Coaches Named FCIAC Coach of the Year

One Coach Named CHSCA Coach of the Year

Athletic Director Inducted to FCIAC Hall of Fame

Civic Responsibility

“Serving the community to improve the quality of life for those in need has been a critical component of public education in Greenwich for many years. GPS students inspire all of us with their generous spirits and acts of service.

We are developing **habits of the mind *and* habits of the heart.**”

- Ernest Fleishman

Former Superintendent of the Greenwich Public Schools

Ninety-seven service and extra-curricular clubs at GHS

**2016 is the 30th Anniversary of
GPS Community Service/Fleishman Awards
Established in 1986**

GREENWICH HIGH SCHOOL

- Chris Winters
GHS Headmaster