

GREENWICH PUBLIC SCHOOLS

Greenwich, CT

Greenwich Association of Realtors
at New Lebanon School
April 1, 2016

Agenda

Welcome and Introduction

- Director of Communications Kim Eves

District Overview & Strategic Goals

- Board of Education Chair Laura Erickson

New Lebanon School & Magnet Program

- New Lebanon School Principal Barbara Riccio

New Lebanon School Building Project

- Managing Director of Operations Jim Hricay

Optional Tour

DISTRICT OVERVIEW & STRATEGIC GOALS

- Laura Erickson
Board of Education Chair

2015-2020 Strategic Plan

STRATEGIC GOALS:

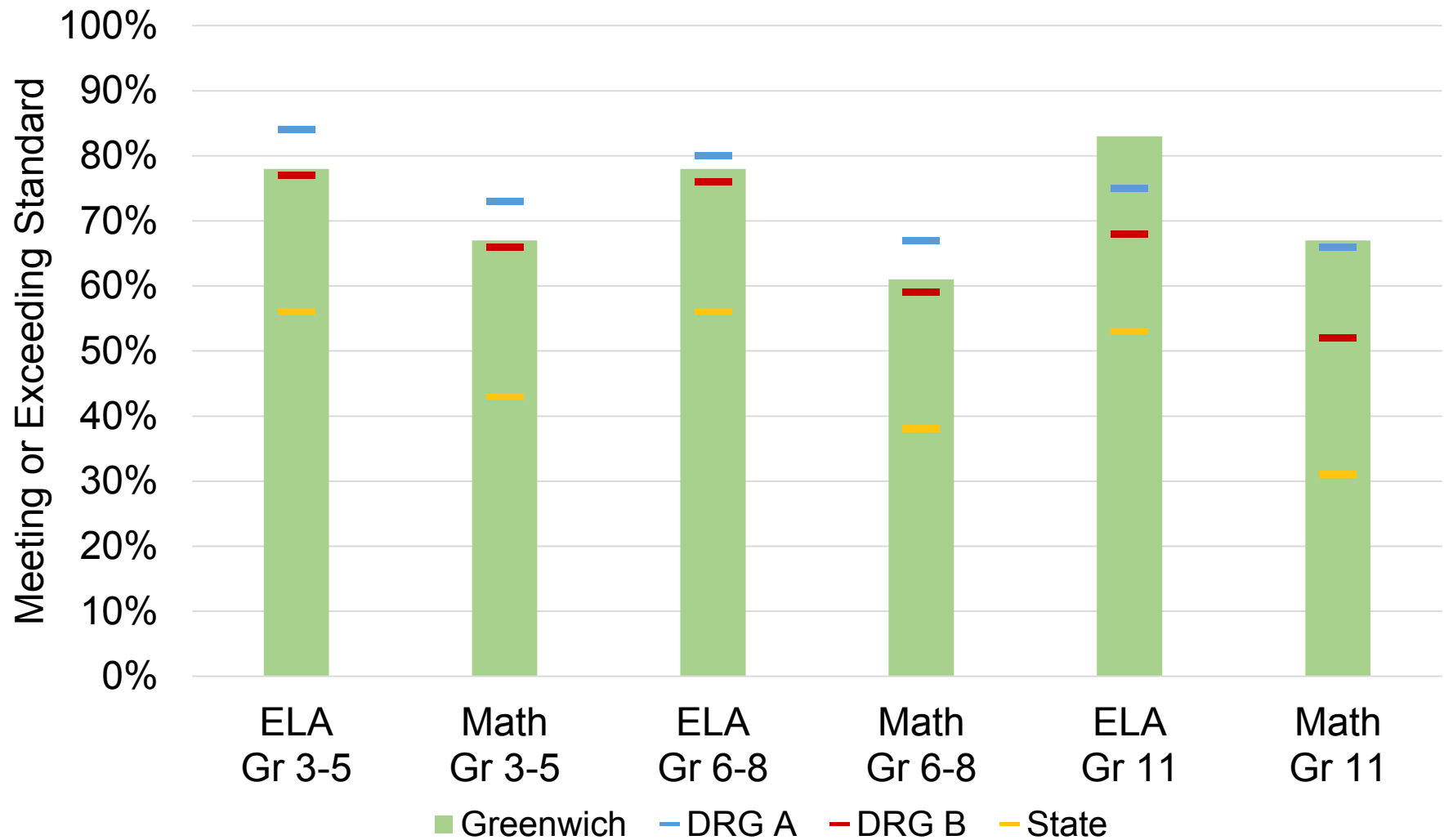
- **Academic:** To ensure each student achieves optimal growth within the core academic disciplines based on multiple variables
- **Personal:** To ensure each student develops the capacity to be responsible for their own physical and mental health
- **Interpersonal:** To ensure each student demonstrates growth in personal development and civic responsibility

2015-2020 Strategic Plan

STRATEGIES & ACTION PLANS

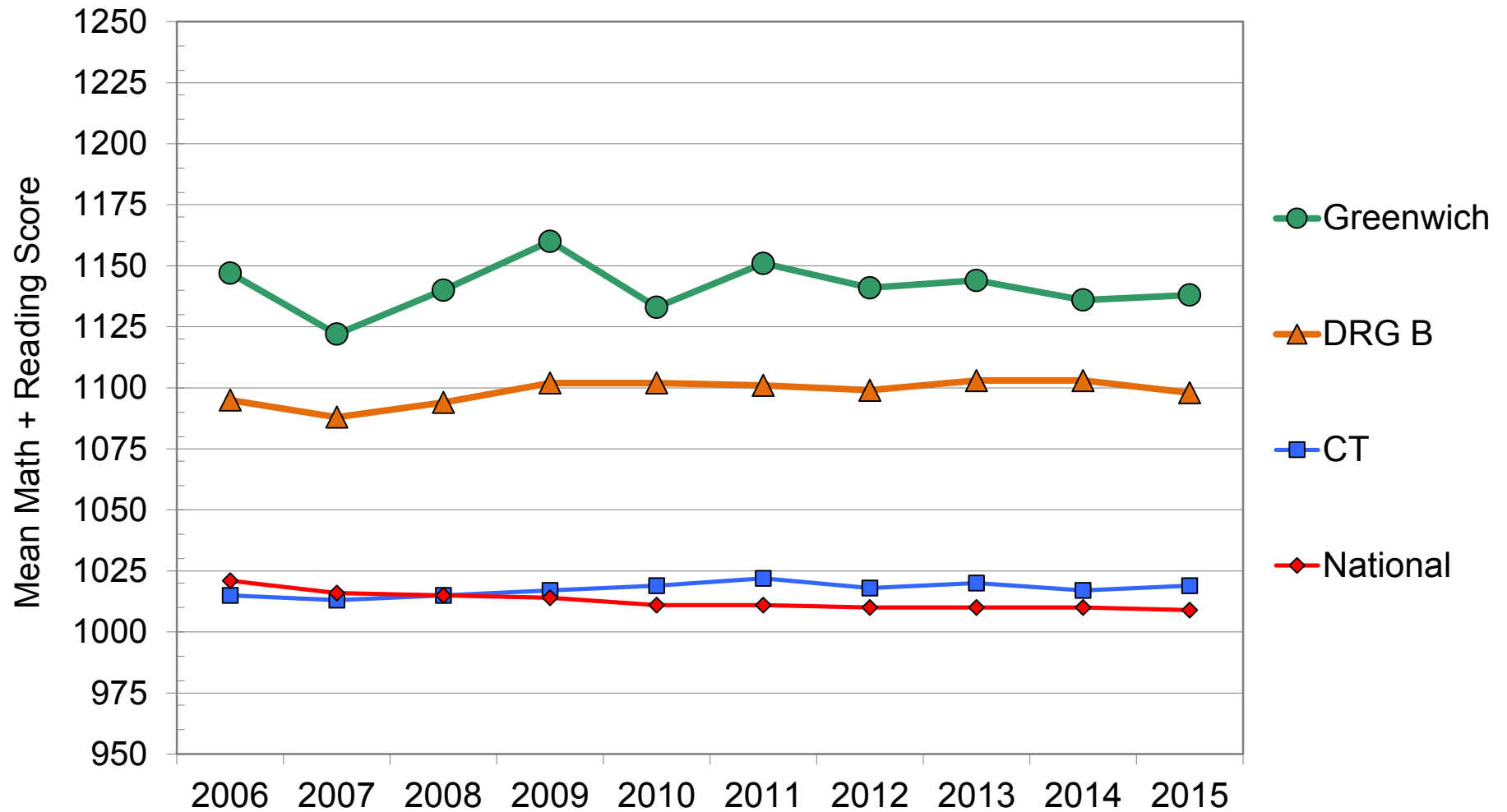
- Theory of Change: Personalize Learning
- Cross-cutting Strategy: Digital Learning Environment
- Strategy 1: Strategic Leadership and Management
- Strategy 2: Standards-based, Rigorous and Relevant Curriculum and Instruction
- Strategy 3: Integrated and Consistent Social-Emotional Learning and Family and Community Engagement programs.
- Strategy 4: Systemic Data and Information Systems

Smarter Balanced Assessment Spring 2015



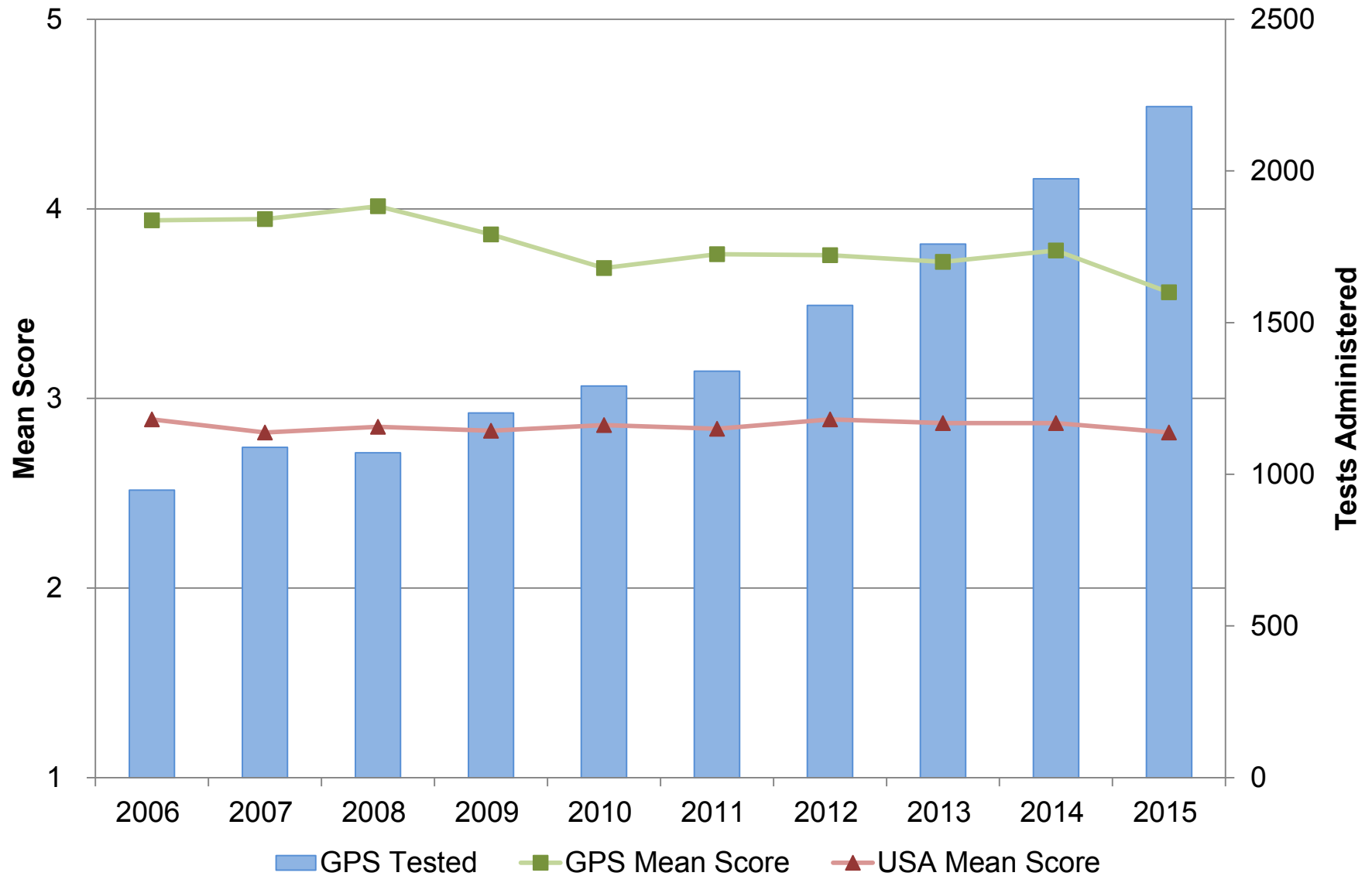
Note: District Reference Groups (DRG) are communities with similar demographic characteristics. Greenwich is in DRG B along with Fairfield, Newtown and Simsbury among others. DRG A includes Darien, New Canaan, Westport and Wilton.

College Board SAT Combined Math and Reading Score 2006-2015



Greenwich High School

Mean AP Scores vs AP Tests Administered



GREENWICH PUBLIC SCHOOLS

Merit Scholars



2015-2016:

Ten National Merit Semifinalists
Thirty-seven Commended Students
Three National Hispanic Scholars

Science



**2015 Google Science Fair
Global Grand Prize Winner:
GHS Junior Olivia Hallisey**

GHS Junior Margaret Cirino is Regional Finalist

Science



2015 Intel Science Talent Search

Seven Semifinalists

From 2010-2015

Seventeen Semifinalists and Two Finalists

GREENWICH PUBLIC SCHOOLS

Science



2015 International Science Fairs

Intel ISEF: Seven Finalists

From 2010-2015: Thirteen Finalists

I-SWEEEP Olympiad: One Grand Award,
Two Gold Medal and Two Bronze Medal Awards

Science



2015 CT Science and Engineering Fair

Thirteen GHS Finalists; One CMS Finalist

Five Finalists Selected for Intel ISEF

Four Finalists Selected for I-SWEEEP Olympiad

GREENWICH PUBLIC SCHOOLS

Math



CT State Math League Champions

Six Out of Seven Years: 2009, 2010, 2011, 2012, 2013, 2015

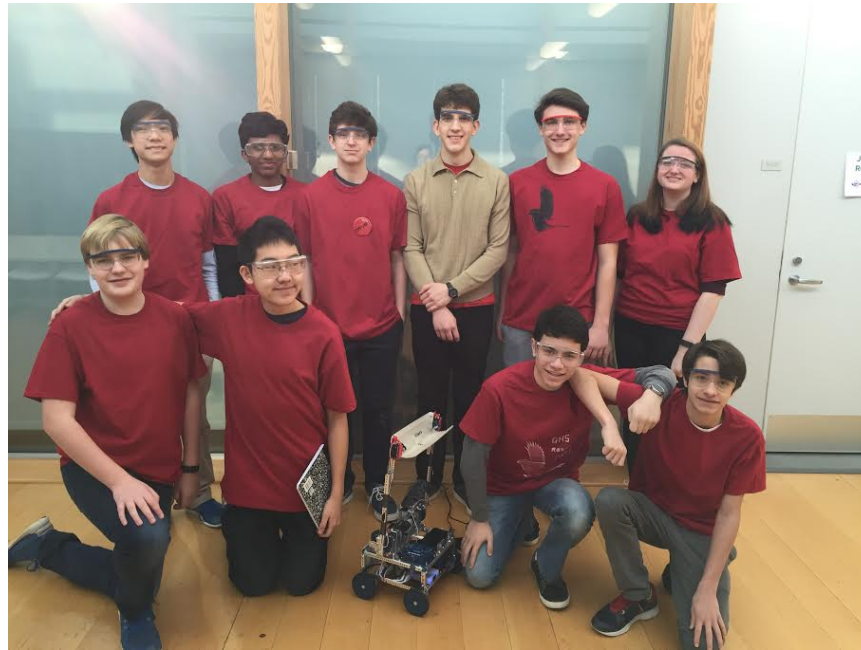
GREENWICH PUBLIC SCHOOLS

Math



GHS Student Michael Kural member of winning U.S. Team
2015 International Mathematical Olympiad
First U.S. Team to win in twenty-one years

Robotics

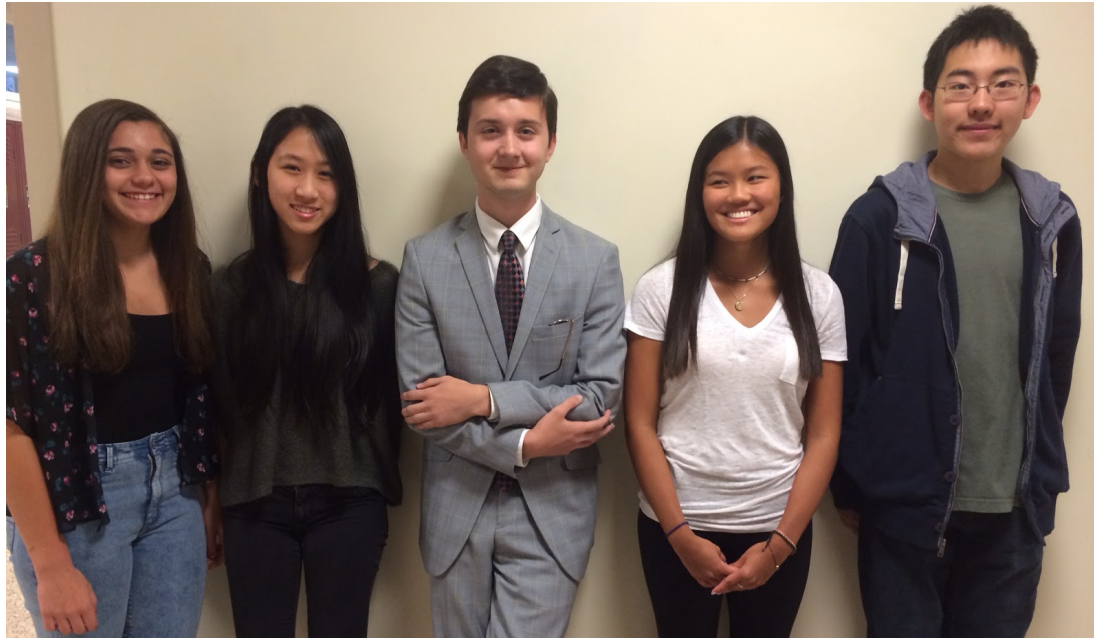


GHS ROBOTICS TEAM QUALIFIES FOR STATE CHAMPIONSHIP

First time team participates in First Robotics
Qualifying Competition receives Second Place

GREENWICH PUBLIC SCHOOLS

Writing



2015 New York Times Editorial Contest

Two GHS Student Essays in Top Ten Nationally
One Essay Receives Honorable Mention

Debate



**GHS Debate Team among top 16 teams in ongoing
2016 International Public Policy Forum
Debate Competition**

Johns Hopkins Talent Search



2014-15: Eighteen GPS students scored in
Top 25-30% in Nation
on the SCAT (Grades 2-6) & the SAT (Grades 7-8)

Art



**Scholastic
Art & Writing
Awards**

2015

Eleven GHS students received:
Twelve CT Scholastic Art Awards,
Two scholarships, and
One of Five Best in Show Awards

Music



GPS Honor Choir
Received a Gold Award and Superior Rating
at the
2014-2015 Chicago World Strides
Heritage Music Festival

GREENWICH PUBLIC SCHOOLS

Theater Arts



2000, 2005, 2010, 2015

Outstanding School Theater Program Award*

Greenwich High School

*schools are eligible for the award every five years

Athletics



2014-2015

Four State Athletic Championships

Three Coaches Named FCIAC Coach of the Year

One Coach Named CHSCA Coach of the Year

Athletic Director Inducted to FCIAC Hall of Fame

Civic Responsibility

“Serving the community to improve the quality of life for those in need has been a critical component of public education in Greenwich for many years. GPS students inspire all of us with their generous spirits and acts of service. I am proud to celebrate thirty years of formally honoring our youngest community service volunteers.”

Ernest Fleishman

Former Superintendent of the Greenwich Public Schools

Ninety-seven service and extra-curricular clubs at GHS

**2016 is the 30th Anniversary of
GPS Community Service/Fleishman Awards
Established in 1986**

NEW LEBANON SCHOOL

- Barbara Riccio
NLS Principal

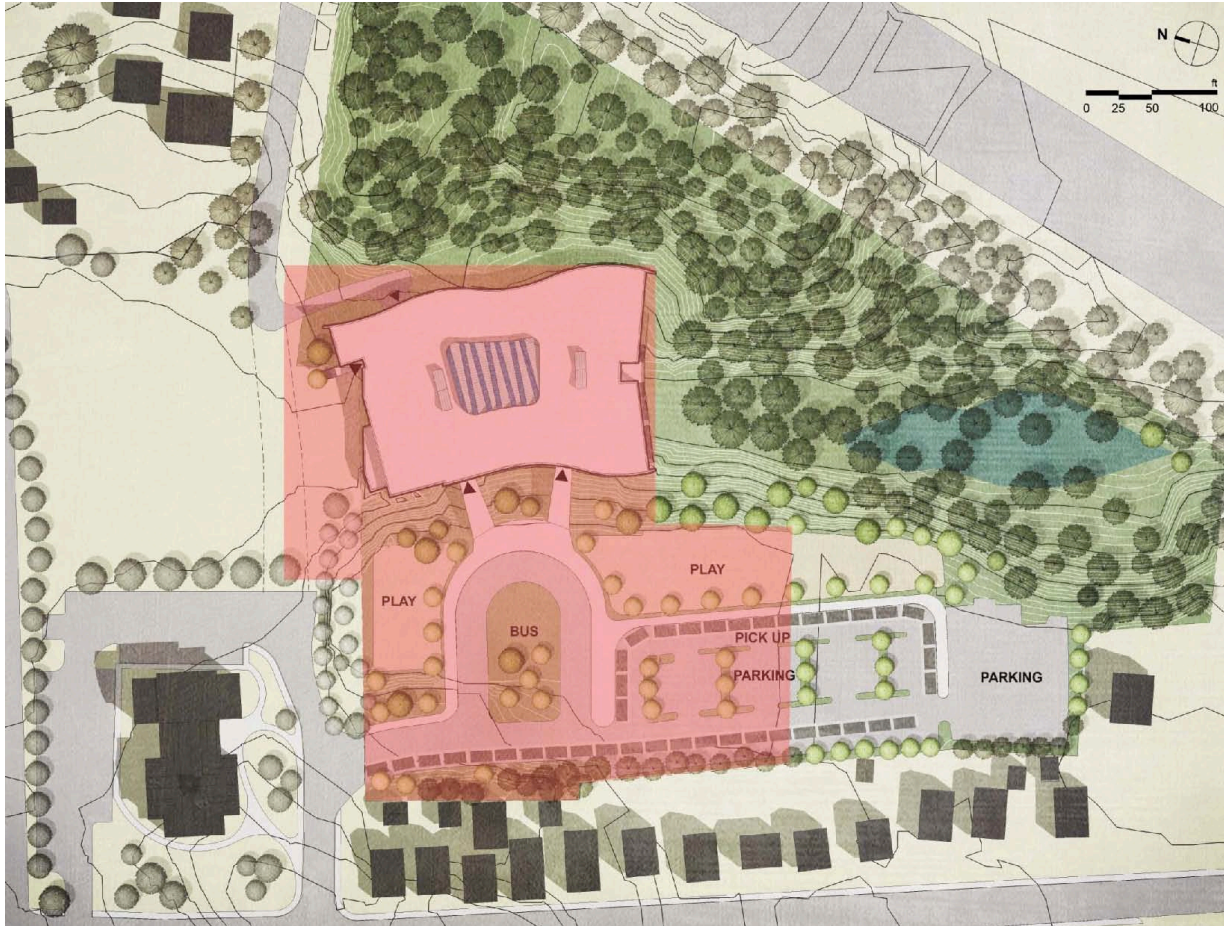
NEW LEBANON SCHOOL BUILDING PROJECT

- Jim Hricay
Managing Director
of Operations

New Lebanon School



The Site



Design Facts

- Current New Lebanon School is a 37,000 ft² facility that is undersized for today's Byram community.
- Current occupancy is 264 students.
- New building accommodates 374 students, which will include 45 preschool seats and 50 magnet seats.
- Reintegrating preschool and kindergarten back into the school community.
- New school designed square footage is 62,472 ft²

Design Facts

- Expanded core spaces:
 - Media Center
 - Gym
 - Cafeteria
- Playing field planned to provide a more usable multi-purpose site for the community. Design specifics are not yet available.
- As with all schools, New Lebanon will be available to community groups through our facilities use program.

Lower Level



Main Level



Construction Schedule

- The project is currently going through the land use approval process
- Full project documents are expected to be ready by December 2016.
- The Connecticut State Office of School Facilities is expected to review and approve the plans in January 2017.
- Construction targeted to begin in July 2017.
- If all proceeds as planned, we will move into the new school in September 2018. Otherwise, we will move in in January 2019.