

**GREENWICH HIGH SCHOOL MUSIC INSTRUCTIONAL SPACE & AUDITORIUM
BUILDING COMMITTEE
Greenwich, CT**

Friday, July 5, 2013

To Greenwich High School families and members of the Community:

The Greenwich High School Music Instructional Space & Auditorium (MISA) Building Committee will begin Phase 2A of the project this summer, with mobilization and construction scheduled to start on Monday, July 8, 2013. The complete project is expected to last 2.5 – 3 years, with the construction of the new Auditorium being the first phase and projected to take about 15 months.

Attached please find a summary of the work planned at the site for Summer 2013, as well as an overview of the site use map for Summer 2013.

For ongoing updates on the status of the project, please visit the MISA Building Committee section of the Greenwich Public Schools' web site at: www.greenwickschools.org/MISA. Please note that all future updates will be delivered and available via the web site.

We appreciate the community's support and cooperation throughout this project. While some inconveniences are unavoidable with a project of this scope, we will work to minimize the disruptions to the instructional and extra-curricular programs, as well as to the surrounding neighborhoods. If you have any questions, comments or concerns, please contact the MISA Building Committee at ghs_misa@greenwich.k12.ct.us

Sincerely,
Joe Ross
MISA Building Committee Chairman

REVISED to correct MISA email address 7/8/13

Greenwich High School MISA Project

30 and 60 Day Look Ahead

1. 30 Day Look Ahead Starting 7/8/13
 - a. Install construction fence and silt/erosion control
 - b. Perform demolition in gym for new egress routes
 - c. Remove asphalt and base at auditorium site
 - d. Excavate and dispose of contaminated soil
 - e. Excavate auditorium site to desired sub-grade
 - f. Install new storm water line for gym and auditorium
 - g. Demo existing storm water line
 - h. Commence piles for auditorium addition
 - i. Excavate rock on the east side of site
 - j. Start underpinning at Science Wing
 - k. Commence installation of the new storm water detention system

2. 30 Day Look Ahead Starting 8/8/13
 - a. Complete renovation in gym for new egress routes
 - b. Install storm piping and rain garden at courtyard
 - c. Complete pile installation
 - d. Install sheeting for orchestra pit excavation
 - e. Complete underpinning at Science wing
 - f. Deliver and assemble water filtration system
 - g. Excavate for orchestra pit
 - h. Commence dewatering and filtration operation
 - i. Commence installation of concrete pile caps and grade beams
 - j. Block up windows in technology classroom
 - k. Install primary electrical conduits from switch station to transformer pad and pave
 - l. Complete stormwater retention system and pave
 - m. Install foundations at new toilet rooms

PHASE 2A: Auditorium Addition

"First Summer" – June-August 2013

Phase Highlights:

Auditorium

- Piles, Orchestra Pit, Grade beams

Site

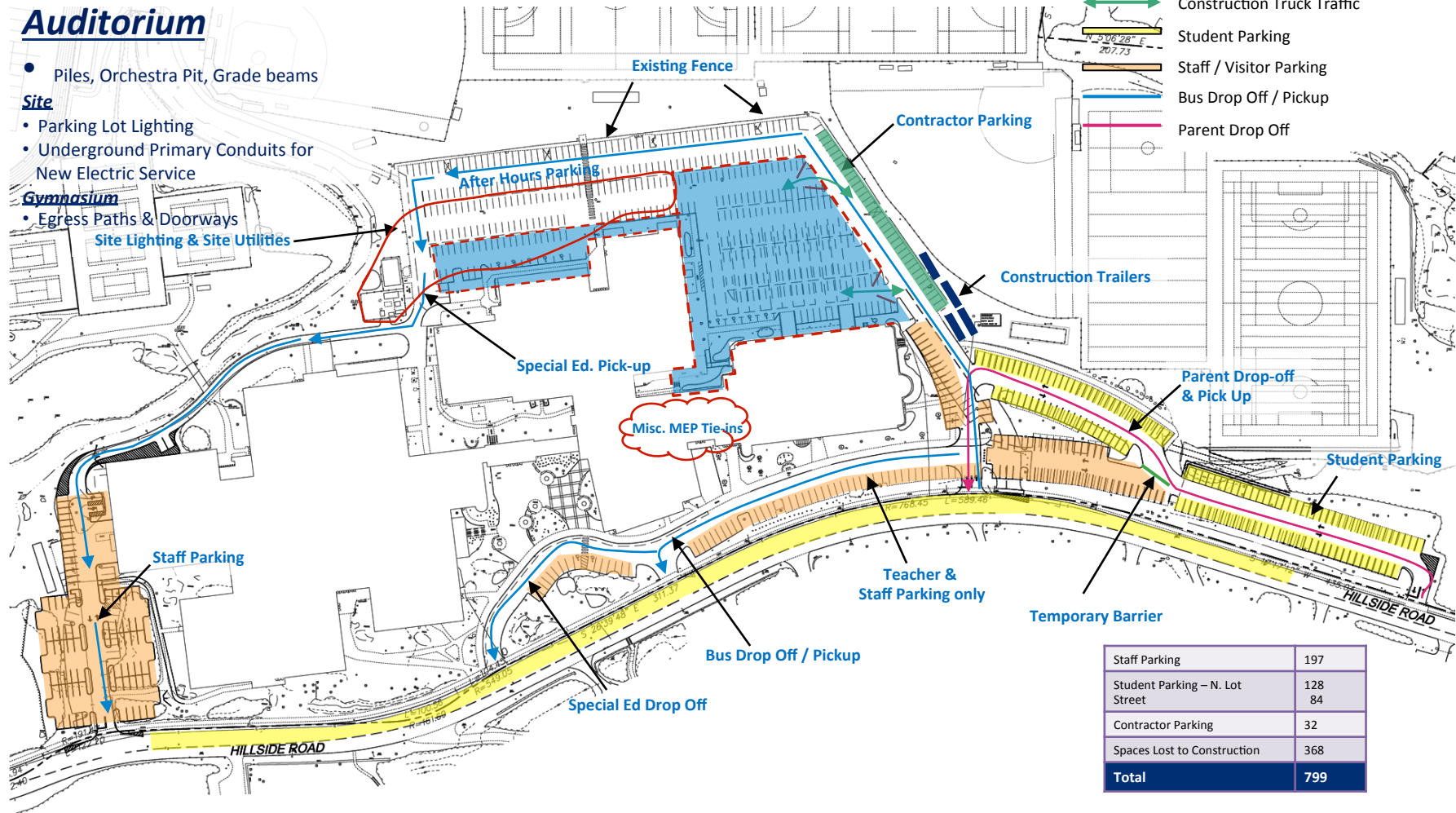
- Parking Lot Lighting
- Underground Primary Conduits for New Electric Service

Gymnasium

- Egress Paths & Doorways
- Site Lighting & Site Utilities

KEY

- Construction Fence
- Staging Area
- Contractor Parking
- Construction Trailers
- ↔ Construction Truck Traffic
- Student Parking
- Staff / Visitor Parking
- Bus Drop Off / Pickup
- Parent Drop Off



Staff Parking	197
Student Parking – N. Lot	128
Street	84
Contractor Parking	32
Spaces Lost to Construction	368
Total	799