

**CARDINAL FIELD IMPROVEMENT PROJECT
STEERING COMMITTEE MINUTES
GREENWICH PUBLIC SCHOOLS**

DATE: 5-2-19

PLACE: Havemeyer Building, 290 Greenwich Avenue, Greenwich, CT 06830
Staff Development Room

ATTENDANCE: Peter Bernstein (BOE representative)
Susan Fahey (RTM representative, absent)
Tony Turner (BET representative)
Russell Davidson (KG&D Architects)

BOE Administration:

Ralph Mayo
Lorianne O'Donnell
Rick Piotrkowski, absent
Dan Watson
Gus Lindine
David Walko
Lillian Perone, absent

TOG Administration:

Jim Michel, DPW

BOE Guests:

Rick Kral, GAF Representative

1. Meeting Opening

Call to Order – 4:02 pm

2. Cardinal Field Group Discussion

Team discussed next steps since the bleachers closed.

Facilities to review and execute supplement for KG+D to perform bleacher design and explore the possibility of using the space underneath, as required by Board of Estimate and Taxation (BET) condition. KG+D noted that there may be some trade-offs with the bleacher design trying to maximize space underneath.

There was discussion about the timing and logistics of the bleacher work since the bleachers have closed (i.e. whether work could begin as early as September or as previously thought in December) and it seemed possible to start as early as September if logistics could be worked out.

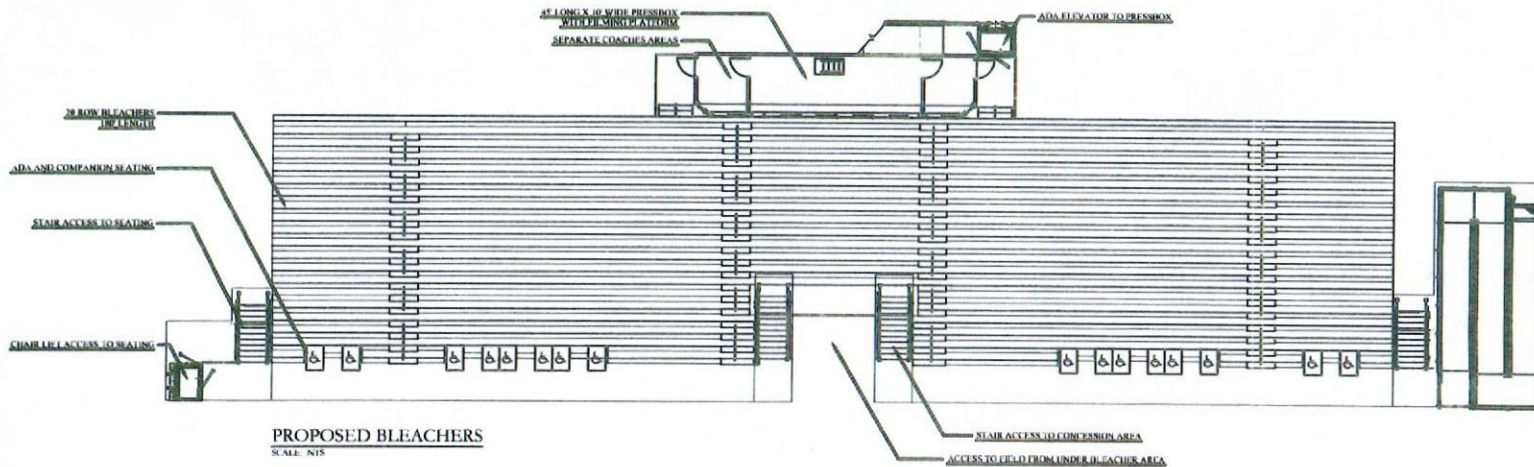
There is a BET condition that requires an update on potential fundraising for this project. Rick Kral (representing GAF) presented an alternative cardinal stadium design (attached) and stated that GAF would be willing to raise 20% for this design.

The committee was asked to provide feedback on the version presented by Rick Kral. There were concerns about activities that might go on behind the bleachers and the timeline to execution. While comments included comments such as, Option B is still the best plan, there were concerns about timeline, general support for the project and the need for additional funding (beyond the current \$3.9M) for the longer term project (phases 2 and 3).

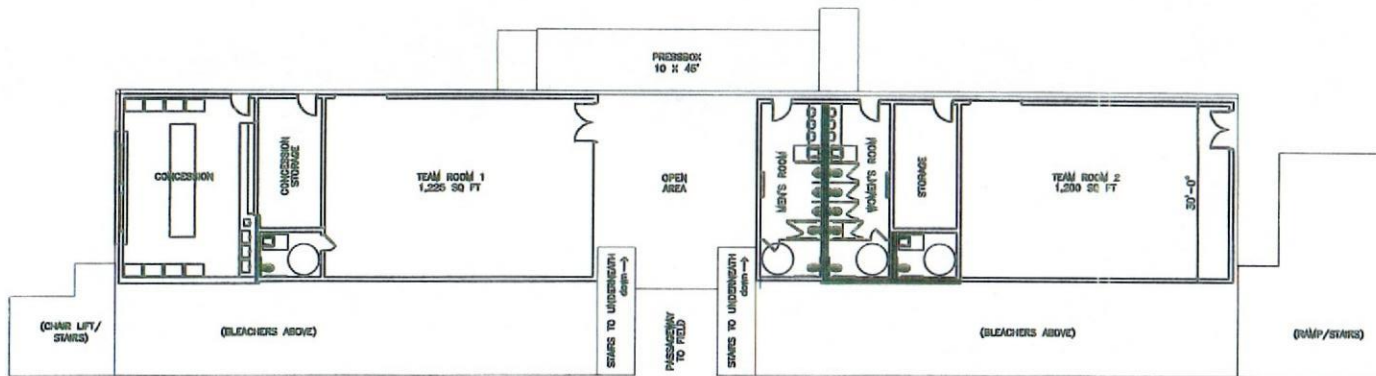
3. Adjournment

Meeting ended at 5:17 pm

Respectfully submitted,
Lorianne O'Donnell



PROPOSED BLEACHERS
SCALE: NTS



PROPOSED UNDER-BLEACHER LAYOUT
SCALE: NTS

DRAFT

**PROPOSED BLEACHER PLAN
GREENWICH HIGH SCHOOL**

GREENWICH, CONNECTICUT

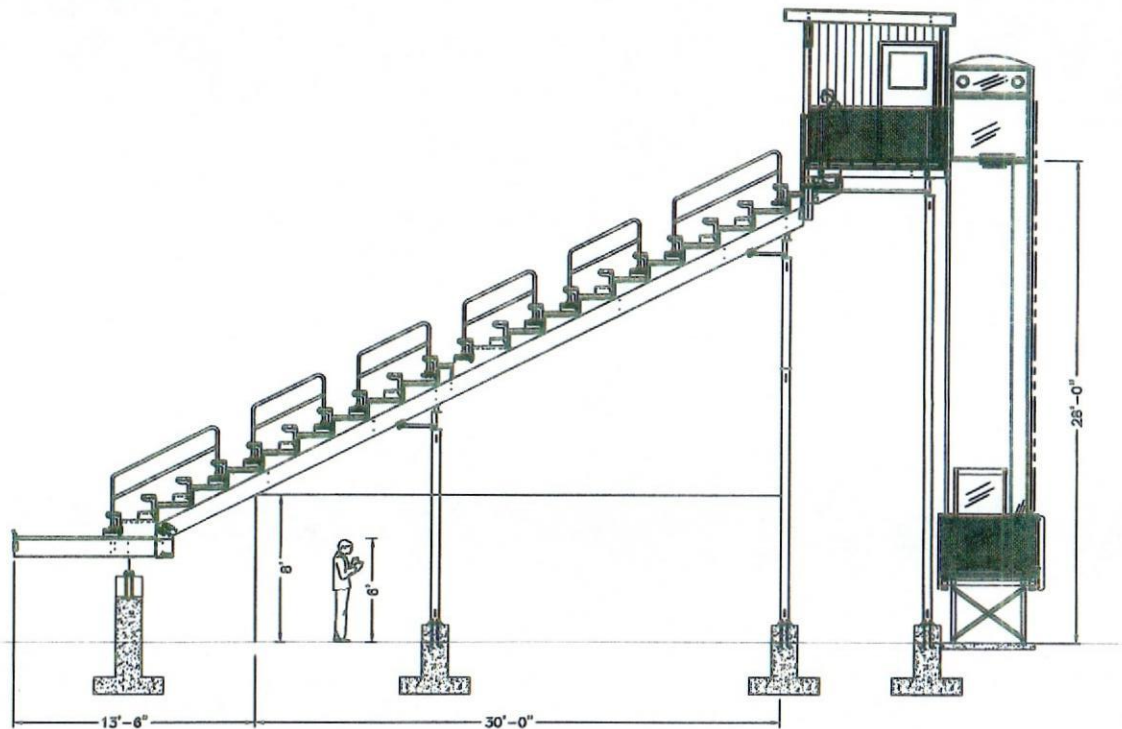
GREENWICH PUBLIC SCHOOLS

GREENWICH ATHLETIC FOUNDATION



MAY 2019





PROPOSED BLEACHER CROSS-SECTION

SCALE: NTS

DRAFT

**PROPOSED BLEACHER PLAN
GREENWICH HIGH SCHOOL**

GREENWICH, CONNECTICUT

GREENWICH PUBLIC SCHOOLS

GREENWICH ATHLETIC FOUNDATION



MAY 2019