



Welcome to New Lebanon School!

2021-2022 School Year!
Espanol





Introductions



- **Mrs. Michaelson - Your Principal**
 - **alexandra_bartholomew@greenwich.k12.ct.us**
- **Mrs. Eisenstein - Your Assistant Principal**
 - **lindsey_eisenstein@greenwich.k12.ct.us**
- **Mrs. Iacovino, Mrs. Mauro, & Mrs. Brown - Your Kindergarten Teachers**
- **Mrs. Christina Gorbai and Ms. Peg Bria - Front Office Staff**
- **Nurse Nancy Minowitz - School Nurse**
- **Mrs. Kaitlin Cyr - School Psychologist**
- **Ms. Sandra Saavedra-Corrente - School Social Worker**
- **Mrs. Christina Nappi - BANC/Archibald After School Program**
- **Melissa Truelove and Dawn Zimmerman - PTA Co-Presidents**



Agenda for Today

- What might next year look like
- Registration Forms
- Medication & Information from our Nurse
- Arrival and Dismissal Procedures
- What does my student do during the day? See a sample daily schedule.
- Lunch, Snack & Water Bottles
- Special Education Support (IEPs and 504s)
- Social and Emotional Support for all students
- BANC After School Program
- A Note from the PTA
- What should I do over the summer to prepare?
- Q&A - type questions OR raise your hand!





What Next Year Might Look Like



- Successes this school year!
 - In person learning
 - Remote School
- Realities this school year
 - Positive Covid cases, exposures
 - No in school transmission at New Leb
 - Quarantines, Safety & Mitigation Strategies
- Nurse support all health needs and concerns and act as our Chief Wellness Advocate
- We will work to ensure 100% compliance and safety for students and staff



Registration Forms



- Please come to New Lebanon School to pick up your registration packet and return the filled out registration documents on or before March 15, 2021. Please bring medical paperwork in when it is complete.
- **Residency Verification**
 - Affidavit of Parents/Guardians -please fill out, sign, and leave blank for the notary
 - Homeowners: Mortgage statement, deed, or real estate bill
 - Renters: Current signed lease or landlord Affidavit
 - Two current utility bills
 - Parent/guardian's photo identification (CT Driver License)
- **Registration**
 - Original birth certificate or passport
 - Registration Form
 - Emergency Contact form
 - Custody Paperwork (if applicable)
- **Notary signature and ID are waived at this time due to Covid**



Contact information: email: Christina_Fedyn-Gorbal@greenwich.k12.ct.us

Phone: 203-548-7711

Espanol: Sandra Saavedra Corrente: Sandra_Corrente@greenwich.k12.ct.us



Medication, Allergies & Info from our School Nurse



- Updated Physical to start school
- Medication at School
 - Medical Forms available online:
<https://www.greenwichschools.org/teaching-learning/student-support-services/health-services/health-forms-immunizations>
- Day to day health concerns
- Allergies (peanuts & nuts)
 - Lunch tables
- Next Year
 - Nurse will support all health needs and concerns for students
 - Nurse will also act as our Chief Wellness Advocate
 - GPS District Nurse is on the CT Regional Task Force





Arrival and Dismissal Procedures

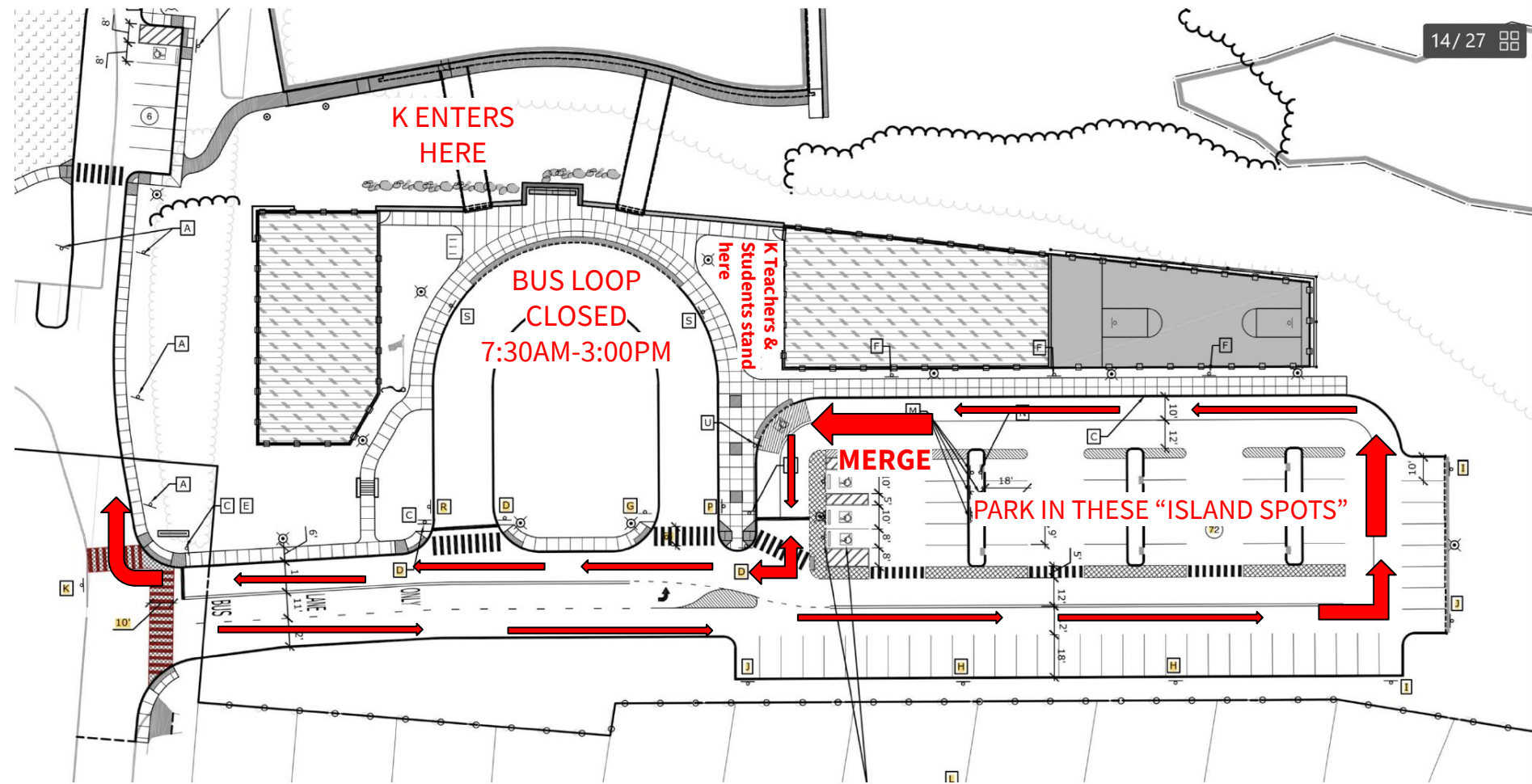
Arrival

- Building opens at 8:00am - free breakfast at each entry point
- Different entry points for different grades for safe distancing
- Class begins (instruction starts) at 8:15am
- Most drive or walk to school - busses are available for magnet students
 - Please drive up driveway to the end of the parking lot, turn left and follow the sidewalk along the playground - pull all the way forward for an adult to help your child out of the vehicle

Dismissal

- Staggered dismissal, starting at 2:30pm going until 2:45pm - see summer mailer for more information
- **All K students either board a bus for an after school program, go to BANC, or are picked up by a parent**
- After School Programs: Archibald/BANC (@ New Leb), Boys & Girls Club, YWCA, Family First
- Drivers: please park and get out of your car - you will pick your child up on the grass in front of the large playground
- Please park in the “island spots” and use the crosswalks (striped white lines) to cross safely to a sidewalk. Please do not walk in between moving vehicles.







What does my student do during on a “typical” day?



Sample Daily Schedule

8:00 Arrival - Doors Open

8:00-8:15 - Arrival & Breakfast

8:15am - SCHOOL STARTS - LEARNING BEGINS

8:15-8:30 Morning Meeting

8:30-9:00 Foundations (Phonics Work/Word Study)

9:00-9:20 Reading Workshop

9:20-10:00- Literacy Groups

10:00-10:30- Snack

10:30-11:30- Specials (Media, Music, Art & P.E.)

11:30-12:00- Science/Social Studies

12:00-12:30- Math

12:30-1:00- Writing Workshop

1:00-1:30- Lunch

1:30-2:00- Recess

2:00-2:30 Pack Up/ WIND

2:30-2:40 FLES

2:45 Dismissal





Snack, Lunch, & Water Bottles



- Snack is daily. Students bring their own snack everyday with appropriate utensils. Snacks ARE NOT shared in case of allergies. Teachers cannot heat up any food.
- Students may bring a filled, non-spill water bottle to school.
- Lunch is 30 minutes. Recess is 30 minutes.
- Students can bring lunch or get a free lunch every day (breakfast is free too!).
- Food Services Website (with weekly menu):
<https://www.greenwichschools.org/departments/food-services/menus-and-meal-prices>
- Practicing opening containers, juice boxes, and similar independently at home.



Special Education Support



- We are a fully inclusive district, where students with special education needs are included in the general education classroom as much as possible.
- If your child has identified special education needs we have most likely already been in contact and have formal meetings set up to review their plans.
- If you have concerns about your child, you can always raise concerns to the classroom teacher or me.
- Kindergarten students come to use with a wide ranges of experiences and skills. Our teachers do a fabulous job of differentiating for their various needs.
- Other Supports:
 - ESL: English as a Second Language
 - Literacy Specialist
 - School Social Worker
 - School Psychologist
 - Academic Interventionist



Social and Emotional Support



- Mandated counseling support through 504's or IEP's
 - Addressing behavior, social skills and social emotional needs
- Informal lunch bunches or through our intervention program
- Utilize School-wide Positive Behavior Interventions and Supports (PBIS)
 - Proactive/Positive approach to establishing the behavioral supports and social culture and needed for all students in a school to achieve social, emotional and academic success
 - Class DOJO is tied to our district norms - Be Here, Be Safe, Be Honest, Care for Self and Others and Let Go and Move On
- Second Step is our district SEL curriculum that is taught throughout each of the grades
- Please reach out with any questions or concerns! :)
 - Kaitlin Cyr - School Psychologist: kaitlin_cyr@greenwich.k12.ct.us
 - Sandra Corrente - Social Worker: sandra_corrente@greenwich.k12.ct.us



BANC After School Program



- BANC is a State of CT Licensed Child Care Center operated by Greenwich Department of Human Services
- Our staff of 13 includes a professional Social Worker from Greenwich Department of Human Services. Our staff are all trained in Pediatric CPR, First Aid and Emergency Medication Administration.
- BANC serves up to 74 children grades K, 1st, 2nd, and 3rd who attend New Lebanon School.
- **BANC program is located at New Lebanon School.**
- Open Monday-Friday from 2:45-5:30 p.m. We are closed on those days that the public schools are closed but open for most early dismissals.
- Activities Include: homework and reading,, reading program, arts and crafts, gym, IPADS, board games, dramatic play, and educational opportunities including: Virtual programs such as: Greenwich United Way Reading Champions and YWCA Second Step program and yoga. If it safety guidelines allow: Children will attend field trips to places such as: Bruce Museum and Byram Shubert Library.
- A healthy snack is provided daily. BANC program is a Nut and Peanut Free program.
- *No Fees to attend program*-however we do ask for a suggested donation of \$75 per child to The Department of Human Services Foundation Fund, INC. to to purchase t-shirts, supplies, snacks and enrichment programing.
- **Registration Info:** Registration will occur prior to start of 2021-2022 school year in July or August. Please contact Program Administrator Christina Nappi at Christina.Nappi@GreenwichCT.org and give your name, child name, address and email address to have an application mailed or emailed to you. Registration is on a first come first serve basis and spaces fill quickly. We do prioritize Kindergarten children applications.



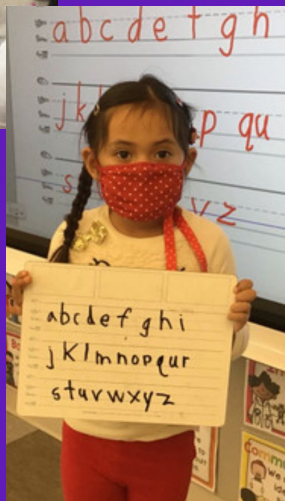
Parent-Teacher Association (PTA)

- PTA Co-Presidents: Melissa Truelove and Dawn Zimmerman
- Contact us at: newlebanonpta@gmail.com
- All are welcome to join!
- Seeking new Leadership!
- Social Networks
 - Facebook:
<https://www.facebook.com/groups/933759170089579>
- Make sure we have your correct Email Address
- Peek at the Week



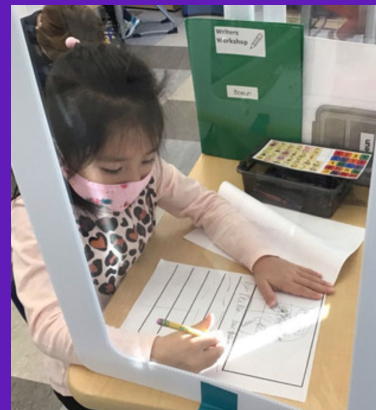


What can we do this summer?



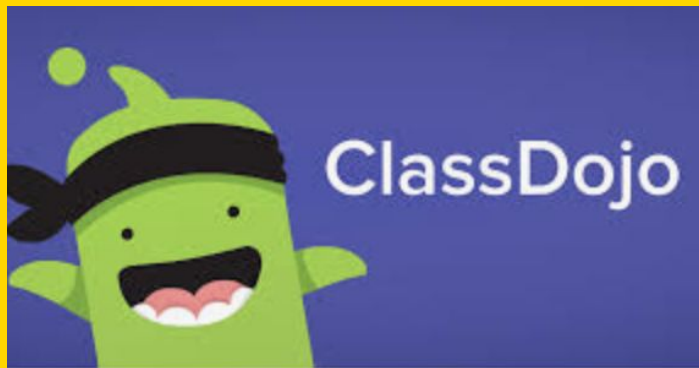
10 WAYS TO PREPARE YOUR CHILD FOR KINDERGARTEN

1. Read to them every day.
2. Work on fine motor skills with playdoh, Legos, sand, etc.
3. Practice writing their name with the first letter capitalized.
4. Learn to follow 2 step directions.
5. Use good manners!
6. Learn social skills such as sharing, taking turns, asking for things they want, etc
7. Help children take responsibility such as cleaning up their messes, getting dressed, etc
8. Build self esteem by allowing children to struggle and overcome obstacles!
9. Teach them to be problem solvers.
10. HAVE FUN AND LET THEM BE KIDS!





Communication



- **There WILL be communication this summer - check your email!**
- DOJO - please join! Login information will be sent home on the first day of school.
Daily Communication with teacher.
- Weekly S'more on Saturday from Administration
- **Email address** is incredibly important - make sure we have the most up to date one!



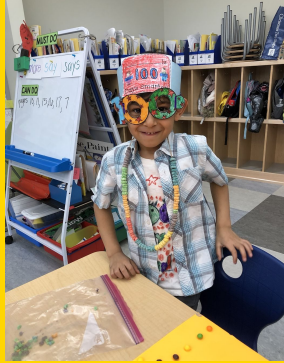
Questions & Answers



What Makes New Leb Special!



Books and Bagels



100th Day of School



Class Celebrations!



Farm to Byram



Veteran's Day



Visits with High School Students



Annual Student Musical



Special Friend's Day



Halloween Parade



What Makes New Leb Safe!

Check out our Safety Video on Youtube explaining all of our Covid Safety Measures we adhere to every day: <https://youtu.be/RMv8yRkmV9M>



Outdoor lunch when weather permits



Art & Music Travel to Classrooms to Eliminate Transitions



Masks and Shields for additional protection



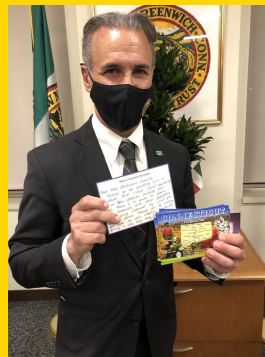
Indoor lunch - 6 feet apart



Safe & Fun PTA Events



Community Building



Strong Traditions, Virtual Visits & Assemblies

